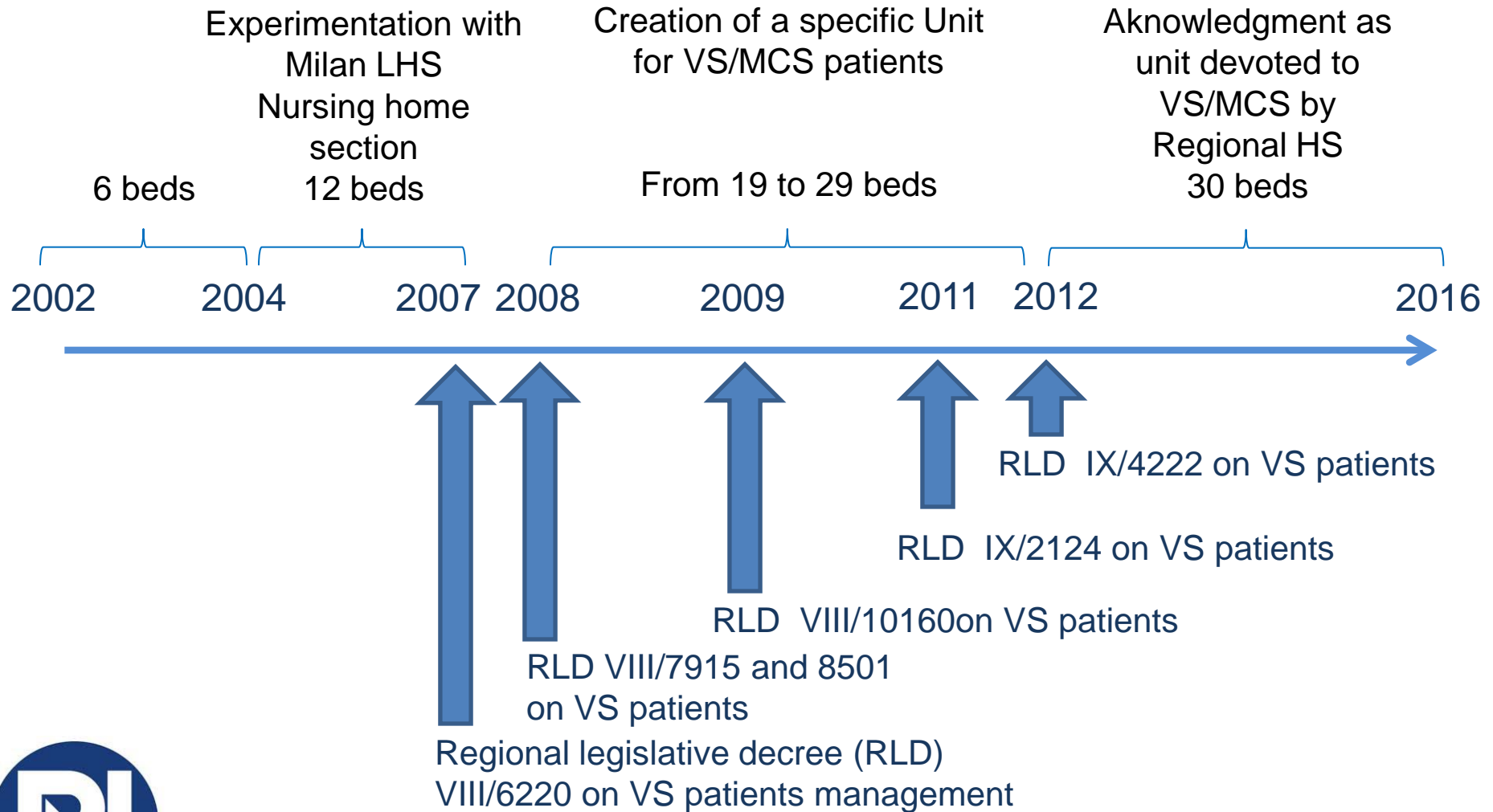




Management of people in Vegetative State or Minimally Conscious State

Service development stages



Clinical and care team

Medical staff	Nursing staff	Other staff
Head physician	Ward sister	Physiotherapists
Clinical supervisor	Nurses	Music therapist
	Nursing assistants	Neuropsychologist
		Clinical psychologist



Devel.
stages

Team

Facilities

Aims

Pts.
features

Pts.
Evol.

Physical facilities

- 17 single, double and triple rooms
- 2 nursing stations (one with vital signs monitor)
- 1 physiotherapy gymnasium
- 1 experimental room (equipped with TMS/EEG)
- 2 recreational areas for caregivers and patients



Devel.
stages

Team

Facilities

Aims

Pts.
features

Pts.
Evol.

Our aims I

- **Management, resolution and monitoring of residual clinical problems**
 - Tracheostomy tube removal if possible
 - Bed sores management and prevention
 - Infections management and prevention
 - Malnutrition management and prevention
 - Pharmacological therapy modification if needed
 - Spasticity management
 - Craniectomy related problems (rare)



Devel.
stages

Team

Facilities

Aims

Pts.
features

Pts.
Evol.

Our aims II

- **Planning of care program on the base of consciousness level**
 - Accurate behavioral and neurophysiological assessment of consciousness level (CRS-R, TMS/EEG, EEG)
 - Definition of activities according to consciousness level (physiotherapy, music therapy, cognitive stimulation) → more investment on MCS
 - Definition of Caregiver role in the care program
- **Long-term care and monitoring**
 - Monitoring clinical condition
 - Monitoring level of consciousness
 - Returning home (rare)
- **Research activity**
 - TMS/EEG, neurophysiology of consciousness (in collaboration with Univerisity of Milan, Prof. M. Massimini)



Devel.
stages

Team

Facilities

Aims

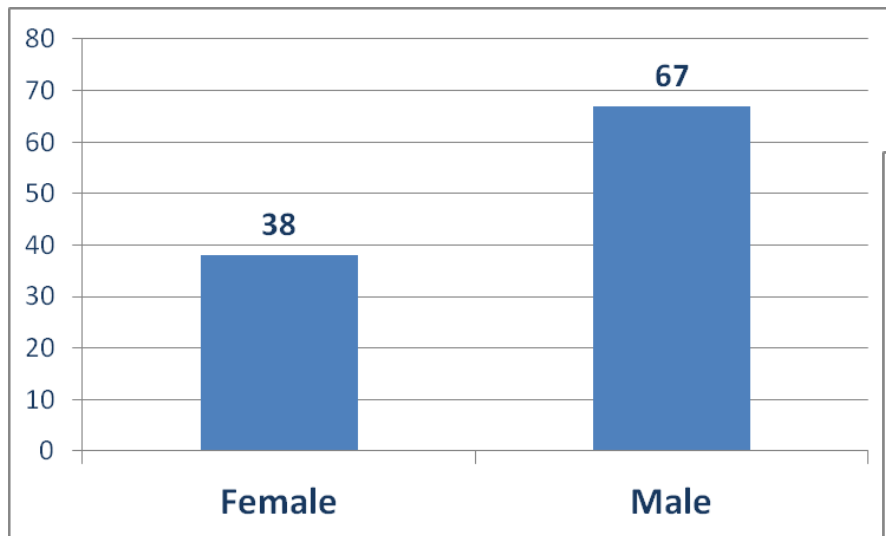
Pts.
features

Pts.
Evol.

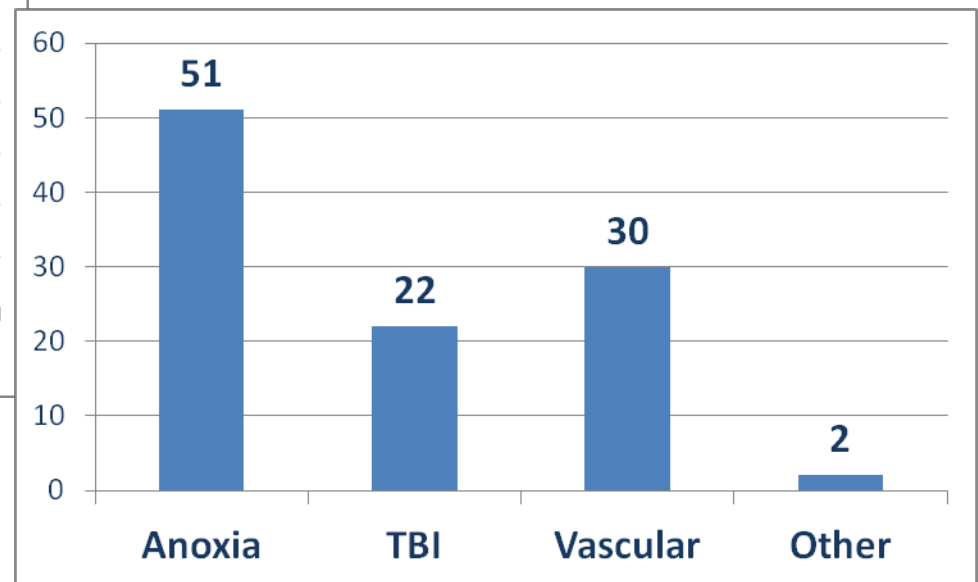
Patients characteristics I

- From 2002 to May 2016: 105 patients cared
 - Mean age: 52,8 yr

Gender



Etiology



Devel.
stages

Team

Facilities

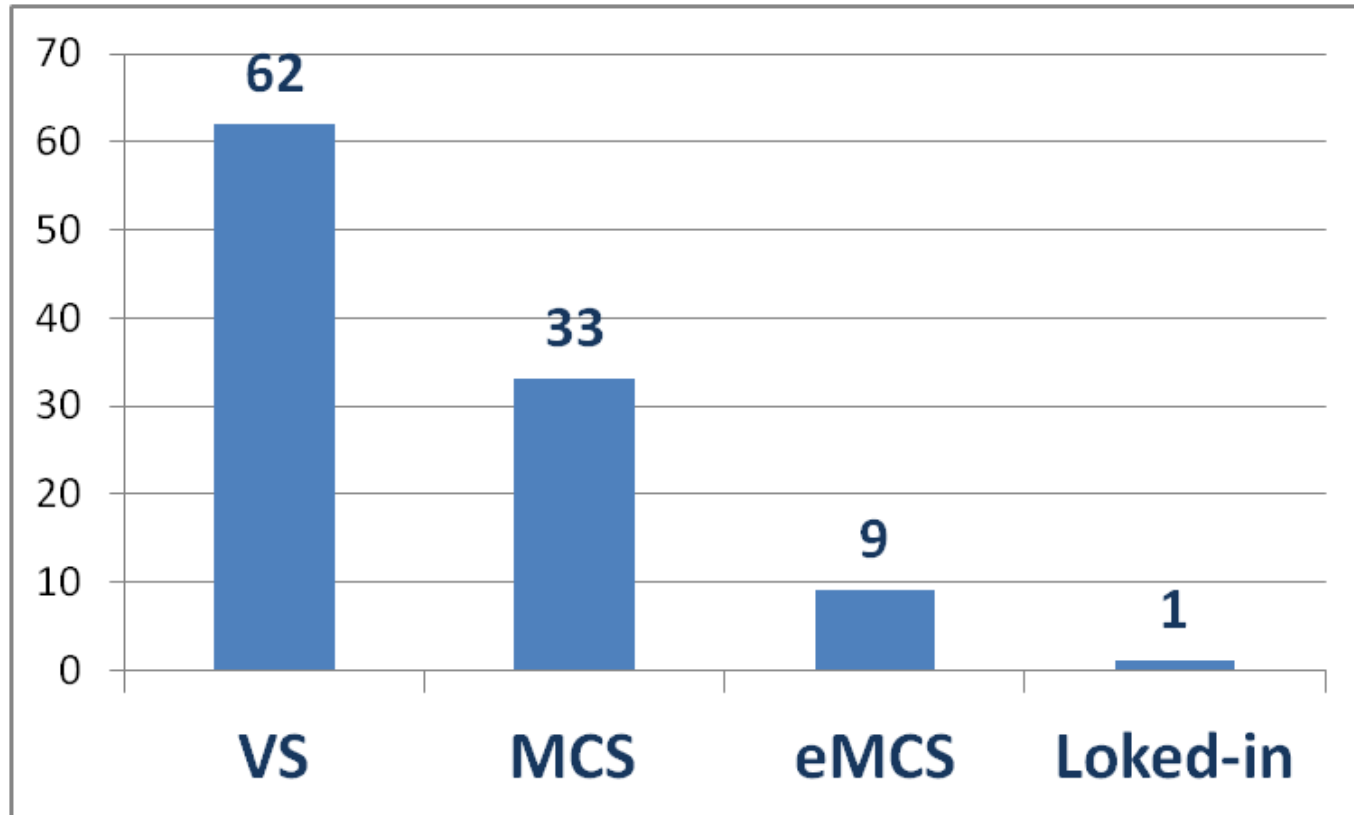
Aims

Pts.
features

Pts.
Evol.

Patients characteristics II

Level of consciousness



Devel.
stages

Team

Facilities

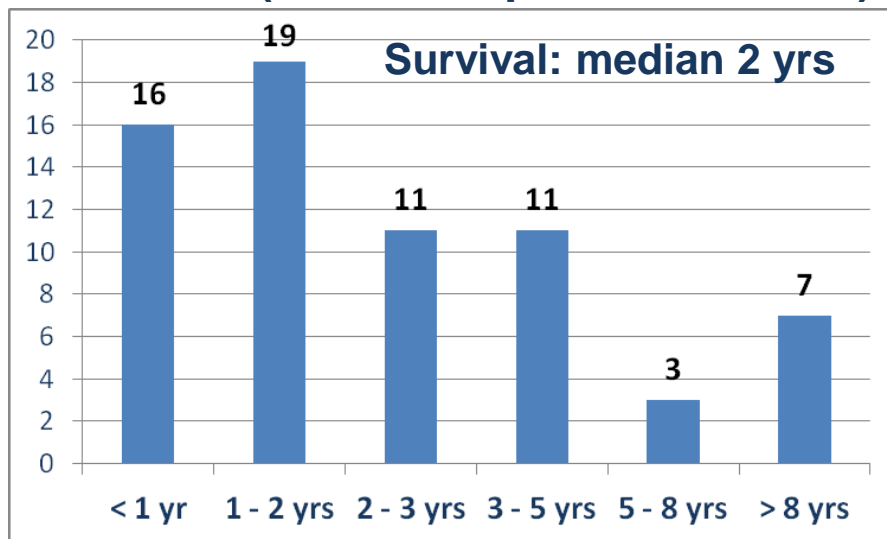
Aims

Pts.
features

Pts.
Evol.

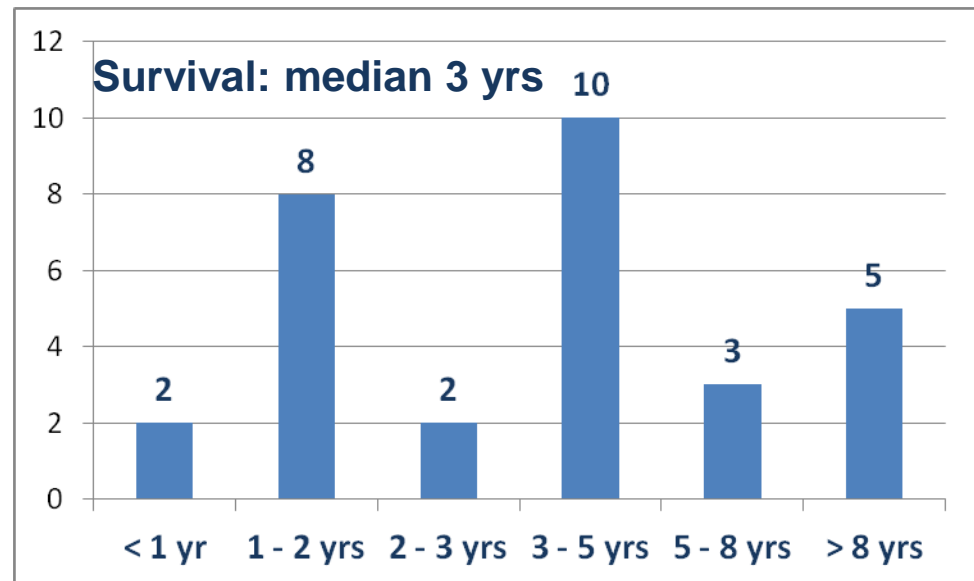
Patients characteristics III

Survival (deceased patients, N = 67)



Discharged patients, N = 8
No information

Survival (current patients, N = 30)



Devel.
stages

Team

Facilities

Aims

Pts.
features

Pts.
Evol.

Evolution of the consciousness level

	Admission	Assessment	Follow-up
Current patients	VS = 30	VS = 17 MCS = 13 eMCS = 0	VS = 13 MCS = 15 eMCS = 2
Deceased patients	VS = 67	VS = 46 MCS = 19 eMCS = 2	VS = 44 MCS = 20 eMCS = 3
Discharged patients	VS = 8	VS = 5 MCS = 0 eMCS = 2 locked-in = 1	VS = 3 MCS = 1 eMCS = 3 locked-in = 1



Devel.
stages

Team

Facilities

Aims

Pts.
features

Pts.
Evol.



Thank you for your attention!



Variazione del livello di coscienza

Degenti: 17 da SV a SMC di cui 2 a GCA

Deceduti: 17 da SV a SMC di cui 3 a GCA

Dimessi: 3 da SV a SMC di cui 1 a GCA

CASISTICA

Device

■ ingresso ■ a 1 anno

