



Assistive Technology services delivery system in Slovakia



Technical University of Košice
Access Centre
and
**Department of Automation,
Control and Human Machine
Interactions**
Mechanical Engineering Faculty

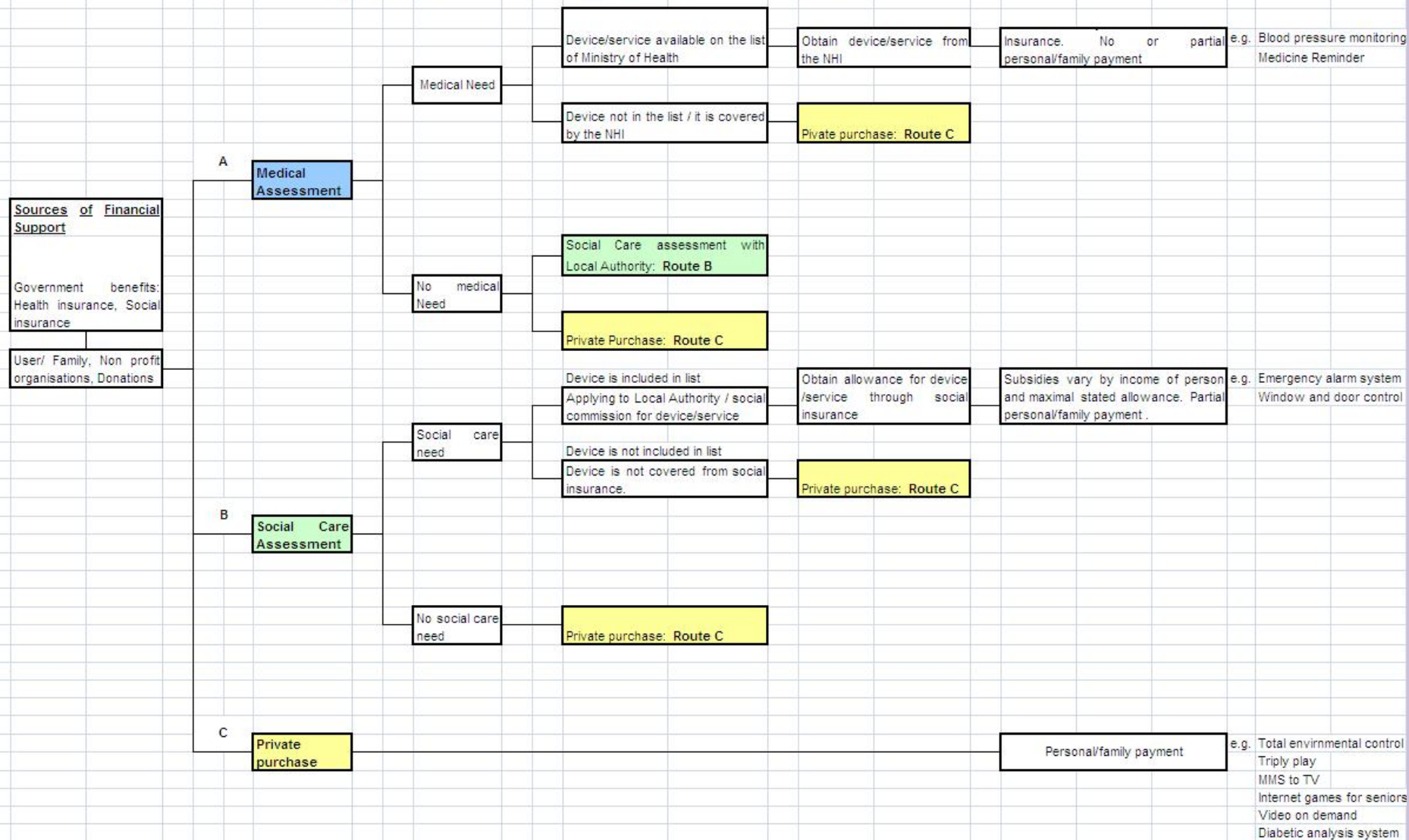
Dušan ŠIMŠÍK, Alena GALAJDOVÁ

Email: dusan.simsik@tuke.sk
<http://web.tuke.sk/AC/indexACeng.html>
<http://www.sjf.tuke.sk/karakr/en>

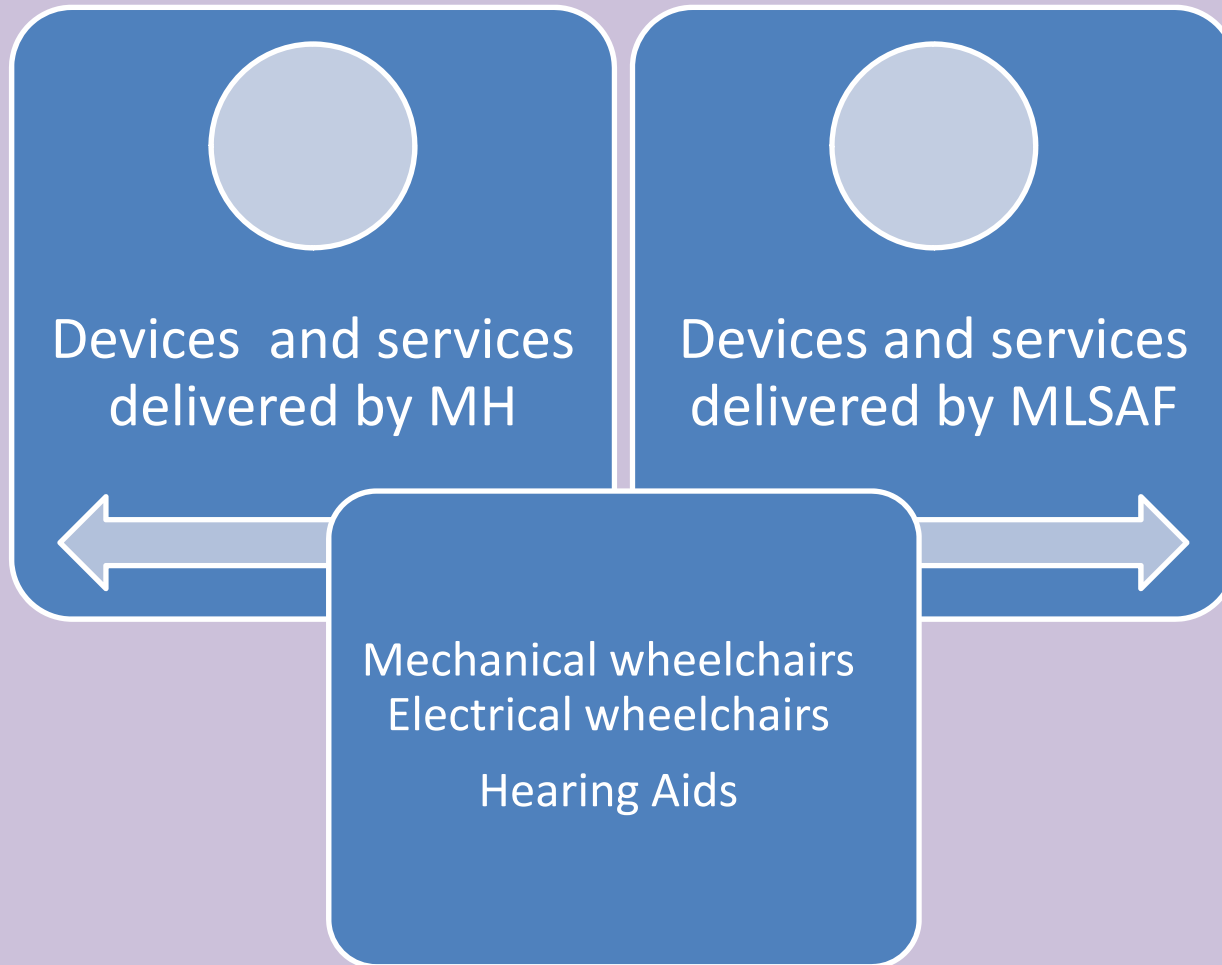
Provision of AT – key players

- Two official bodies are responsible for delivery of AT in Slovakia
 - Ministry of Health (MH)
 - Ministry of Labour, Social Affairs and Family (MLSAF)
- Other sources of AT delivery
 - Private sources (grants, donations)
 - Non profit organisations

Acquiring Assistive technology and Services: The Slovak Model



Overlapping in two lists of devices



Regulation of medical devices and aids

- Medical devices and aids are assessed through a categorization process.
- This includes:
 - the application by the marketing authorization holder of the medical device,
 - evaluations by working groups and
 - a reimbursement proposal prepared by the Reimbursement Committee.

Reimbursement decisions

- The decision as to whether a medical device will be covered by SHI (Slovak Health Insurance), is the competence of the Ministry of Health and its Reimbursement Committee.
- This decision is taken after an assessment and classification of the medical device - “categorization” process was finished.

Reimbursement decisions

- Some procedures, costly pharmaceuticals and medical devices such as artificial joints and pacemakers are reimbursed separately from the hospitalization fee.

Actual categorisation of medical devices

- Ministry of Health issued list of categorised medical devices valid from 1. january 2012, with 3 784 medical devices.
- There are 2 226 (almost 59 %) medical devices without supplementary payment of patient .
- With supplementary payment less than 3,49 Eur, there are around 13 % of devices.

Categorisation includes:

- Prescription limitations
- Indication limitations
- Approval of revision medical doctor with payment for medical device
- Limitation for amount
- Financial limitations, patient's contribution

User involvement / bureaucracy

Process for a valuable AT provision (wheelchair,...) - Instructions for a client

- First step:

Visit of the first contact - GP for recommendation to visit a rehabilitation specialist

- Second step:

Get date for evaluation by rehabilitation specialist

- Third step:

Rehabilitation specialist prescribes wheelchair (be carefull - might be unsuitable) or you can come with prescription number of wheelchair you already tried in supplier and it is suitable for you

- Fourth step:

You have to go to health insurance office and get signature of revisory doctor to approve the application

- Fifth step:

Now you can go to wheelchair supplier and they prepare order of Your wheelchair.

- Sixth step:

You can take your wheelchair home

List of medical devices / MH

	Categorization 1. 10. 2011	Categorization 1.1. 2012
Total number of medical devices in list	4487	3784
Total without supplementary payment	2360	2226
Supplementary payment less than 1 euro	286	217
Supplementary payment less from 1 euro to 1.99 euro	166	120
Supplementary payment less from 2 euro to 3.49 euro	190	125
Supplementary payment less from 3.5 euro to 4.99 euro	106	105
Supplementary payment more than 5 euro	1370	991
Total with supplementary payment	2135	1558

Provision of AT by MLSAF

- Act No. 447/2008 Coll. on Financial allowances for compensation of severe disability consequences (Zákon o peňažných príspevkoch na kompenzáciu ťažkého zdravotného postihnutia)
- Act No. 448/2008 Coll. on Social services (Zákon o sociálnych službách)

Financial allowances limits

- Limit for financial allowances for buying, training and adjustment of AT is stated as a percentage. It is calculated from the price of AT and from income of disabled person.
- Financial allowance is also limited by the maximal price, which is provided in list of AT.

Financial allowances

- Financial allowance a client can get only for AT listed in register .
- Register of AT and maximal financial allowance is stated by the Ministry of Labour, Social Affairs and Family (MLSAF)

Financial allowances categories

- Financial allowance for personal assistants
- Financial allowance for purchase of AT
- Financial allowance for training of AT (dog)
- Financial allowance for modification of AT
- Financial allowance for reparation of AT
- Financial allowance for buying of lifting device
- Financial allowance for buying a car
- Financial allowance for car modification
- Financial allowance for transport
- Financial allowance for modification of flat
- Financial allowance for modification of house
- Financial allowance for modification of garage
- Financial allowance for compensation of higher expenditure as a consequence of disability (clothes, furniture, food, ...)
- Financial allowance for nursing

- It is possible to get financial allowances for purchase, training and modification of AT only if the AT is not provided on the base of health care insurance.
- Exception is for second mechanical or electrical wheelchair and for hearing aid. Client can get it either from the health insurance or/and also from social insurance.

- Maximal limit for AT purchase, training and modification is 8 630,42 EUR.
- Maximal limit for second mechanical wheelchair is 1659,70 EURO, second electrical wheelchair is 4 979,09 EUR and second hearing aid is 331,94 EUR.

- Next financial allowance for purchase training and adaptation of AT of the same type is available after 7 years.
- Next financial allowance for purchase of second electrical wheelchair is available after 10 years.

Financial allowance for purchase of car is approved only, if:

- Person, who applies, works or study or have to visit regularly social care facilities
- Maximal financial limit for purchase of car is 6 638,79 EUR.
- Maximal financial limit for purchase of car with automatic gear box is 8 298,48 EUR

- Financial allowances for flat or house accomodation have to be max 6 638,79 EUR during 7 years period.
- Financial allowances for garage adaptation have to be max 1 659,70 EUR during 7 years.

Limited selection of AT with higher functionalities

- Ceiling lift is not compensated by the health insurance, only by social insurance.
- Bath lift can be prescribed by the rehabilitation specialist, and have to be signed by revisory medical doctor and it is covered by health insurance.
- Wheelchair with verticalisation (in list is only one mechanical and one electrical) is partially covered by health insurance
- For scooters, sports wheelchairs and handbikes there are no financial allowances from health insurance

Conclusions

- Medical professionals (they have to prescribe AT) they have no special education in area of AT.
- They have only a little information about variety of AT on market.
- The only advisors for them in mainstream services are suppliers of AT.
- Users have minimal influence on AT selection.
- For AT supported by social insurance, the final decision is made by staff of social office without good knowledge of AT.